

Garden Soldiers

Common poisonous or irritating individuals in the local landscape



Some of the perils working at RBG



Or they could be as benign as the garden gnome

What is a poisonous plant?

Plants may have several methods of defense.
defense.

What are they?

Cautions and Cures

What are some preventative
measures?

What are some treatments?

What is a poisonous plant?

- *Ingestion (oral)

- *Pollen (inhalation)

- *Contact

LD50

- * Aspirin 420mg/kg
- * Digitoxin 3.7mg/kg
- * Ethyl alcohol (liquor) 1225mg/kg
- * Sodium chloride (salt) 4000mg/kg
- * Nicotine 16.2mg/kg

Ingestion

Ingestion

- * *Digitalis purpurea*
- * Foxglove
- * Digoxin: A heart stimulant



Tobacco

Nicotiana tobaccum

LD₅₀ 16.2mg/kg



Inhalation-Pollen

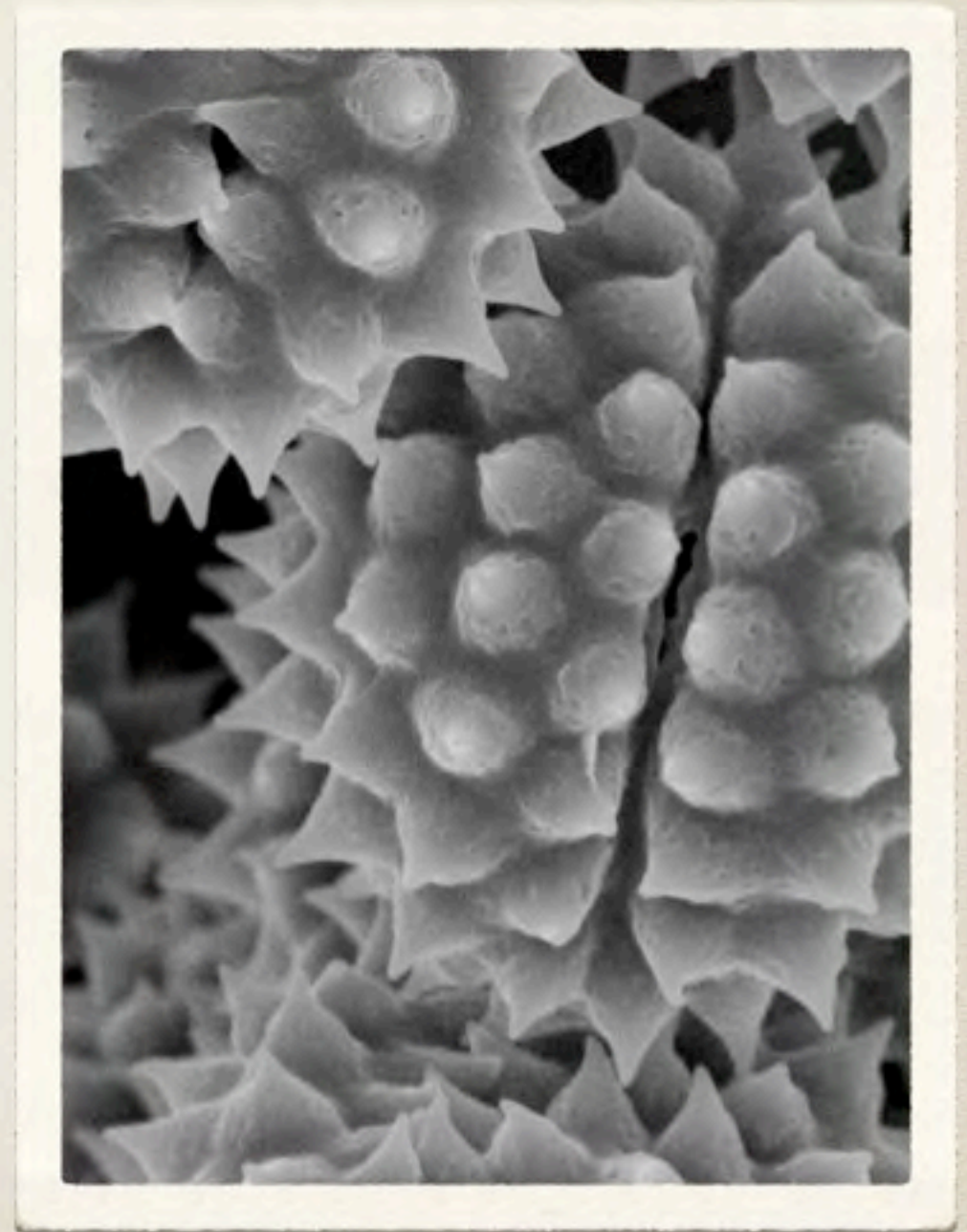
Pollen

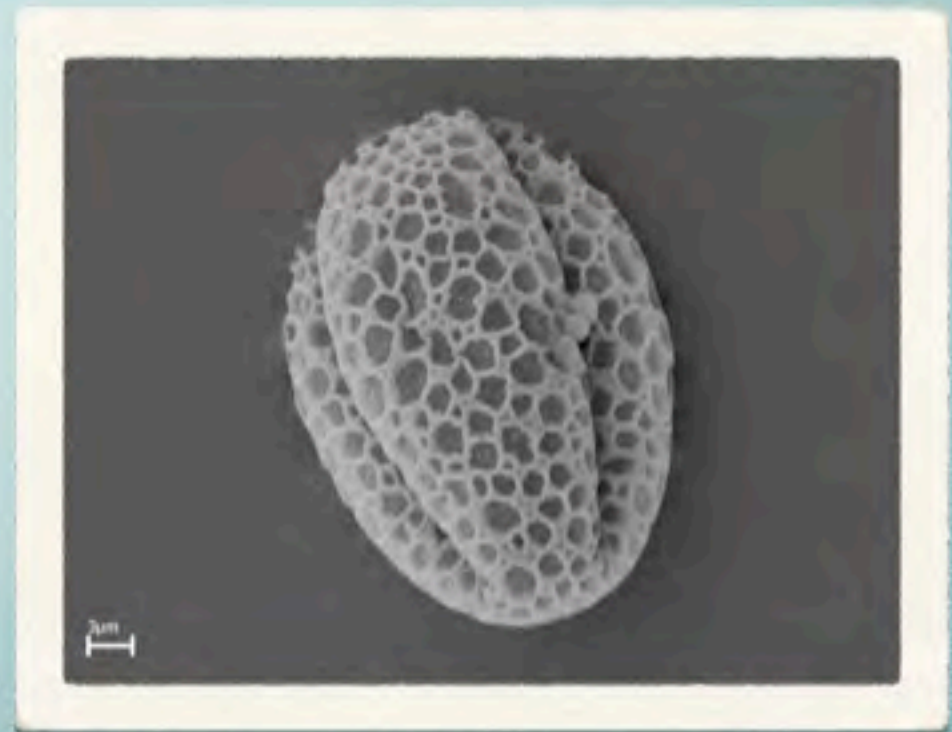
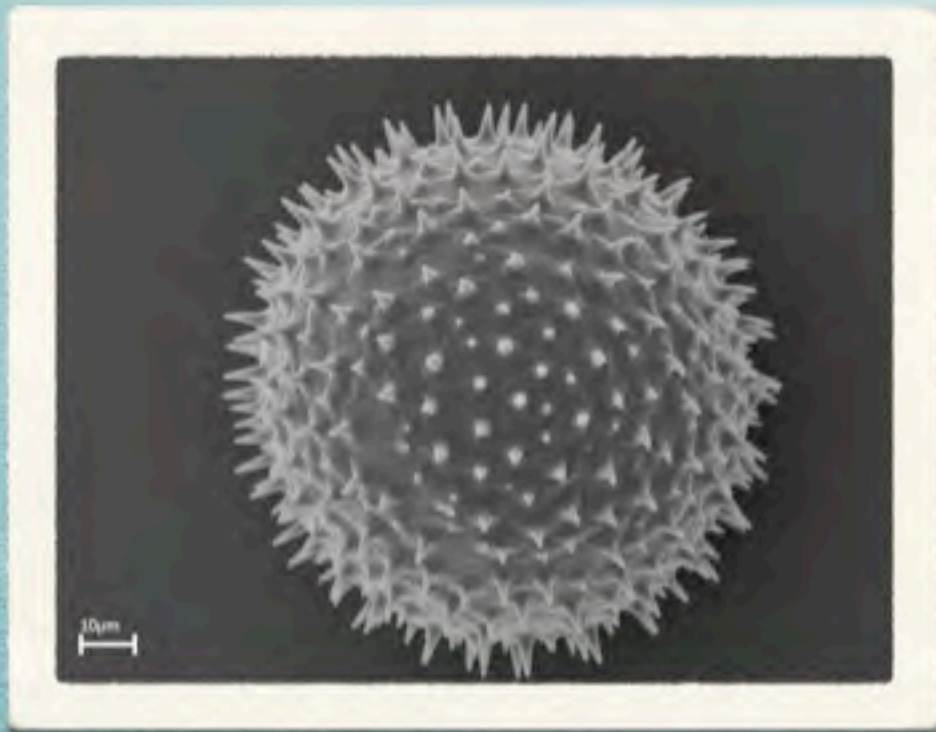
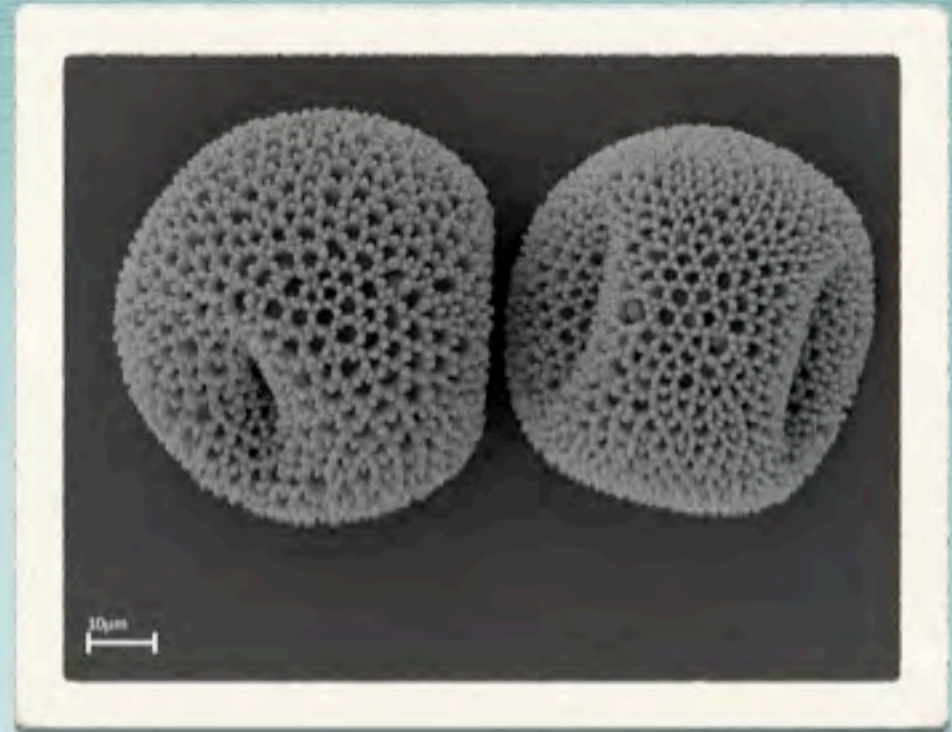
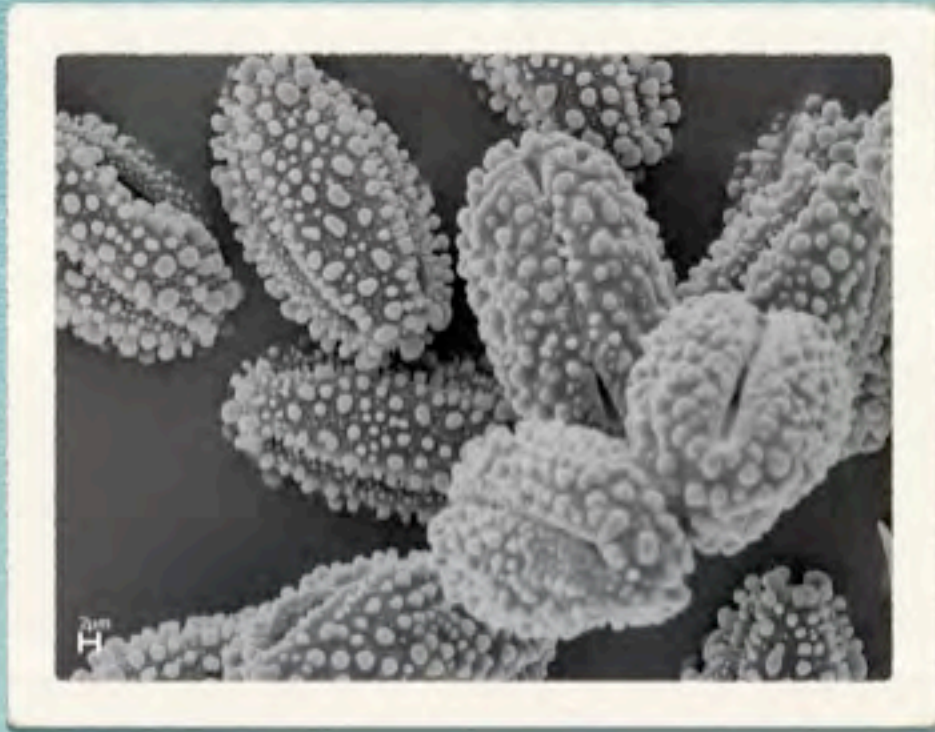
- * *Ambrosia artemisiifolia*
- * Ragweed
- * A common allergen



Pollen

- * *Ambrosia artemisiifolia*
- * Ragweed
- * A common allergen







Common garden soldiers

Quick tips to their recognition!

Contact

Weeping Fig

- * *Ficus species including F. benjamina*
- * Produces a white latex sap
- * a common indoor plant



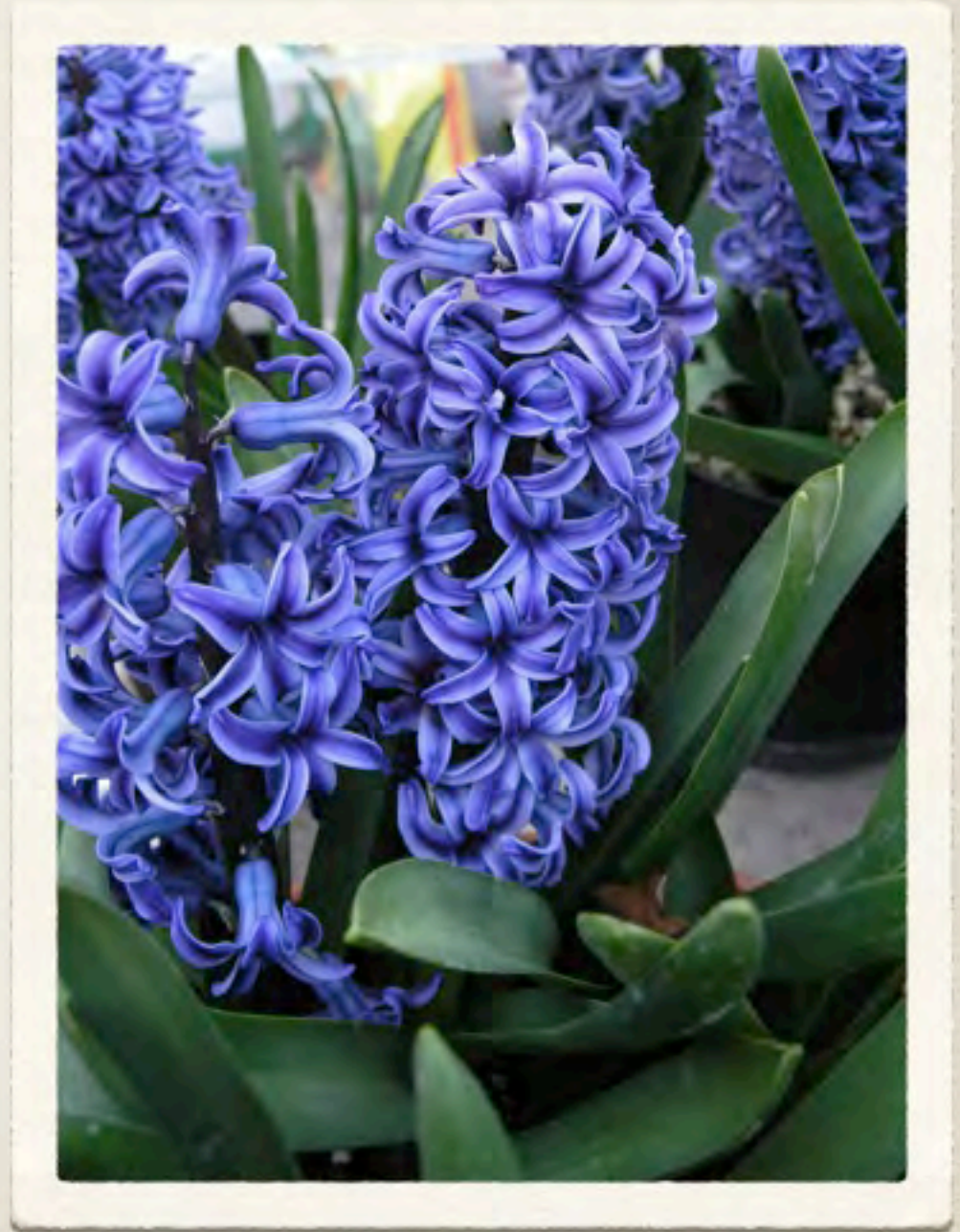
Daffodil

- * *Narcissus pseudonarcissus*
- * The Common Daffodil
- * In some people this plant can cause a severe skin rash



Hyacinth

- * *Hyacinthus orientalis*
- * The Garden Hyacinth
- * In some people this plant can cause a severe skin rash



Tulip species

- * *Tulipa species*
- * Tulips
- * In some people this plant can cause a severe skin rash



Pulmonaria species

- * *Pulmonaria officinalis*
- * Lungwort
- * In some people the hairs from this plant can cause a skin rash



Toxicodendron radicans



Poison Ivy

Leaves of three, let it be.

Poison Ivy- *Toxicodendron radicans*

- * trailing or climbing plant
- * along edges of woods, fields and undisturbed ground
- * intense red autumn colour
- * allergen



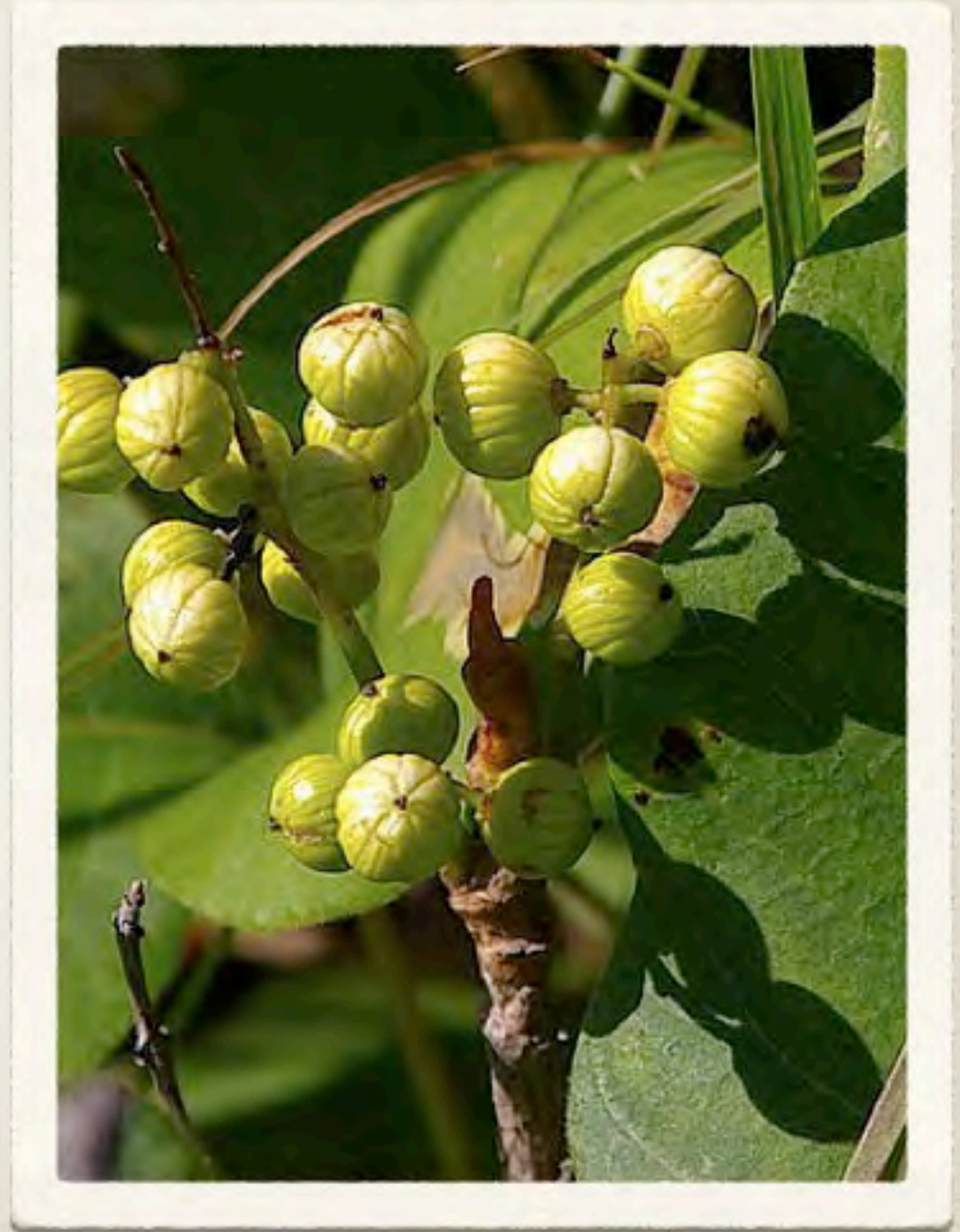
Poison Ivy- *Toxicodendron radicans*

- * Rubbing the rashes won't spread poison ivy to other parts of your body (or to another person). You spread the rash only if **urushiol oil** -- the sticky, resinlike substance that causes the rash -- has been left on your hands.



Poison Ivy- *Toxicodendron radicans*

- * Direct contact is needed to release **urushiol oil**. Stay away from forest fires, direct burning, or anything else that can cause the oil to become airborne such as a lawnmower, trimmer, etc.



Poison Ivy- *Toxicodendron radicans*

- * **Urushiol** oil stays active on any surface, including dead plants, for up to 5 years.



Poison Ivy- *Toxicodendron radicans*

- * The more times you are exposed to urushiol, the more likely it is that you will break out with an allergic rash. For the first time sufferer, it generally takes longer for the rash to show up - generally in 7 to 10 days.



Urtica dioica



Stinging Nettle

Beware the troops who come in groups

Stinging Nettle- *Urtica dioica*

- * Grow in large groups in generally rich soil
- * young shoots of the plant can be cooked and eaten
- * the plant has many medicinal uses
- * spreads by underground runners



Stinging Nettle- *Urtica dioica*

- * Grow in large groups in generally rich soil
- * young shoots of the plant can be cooked and eaten
- * the plant has many medicinal uses
- * spreads by underground runners



Stinging Nettle- *Urtica dioica*



Euphorbia species

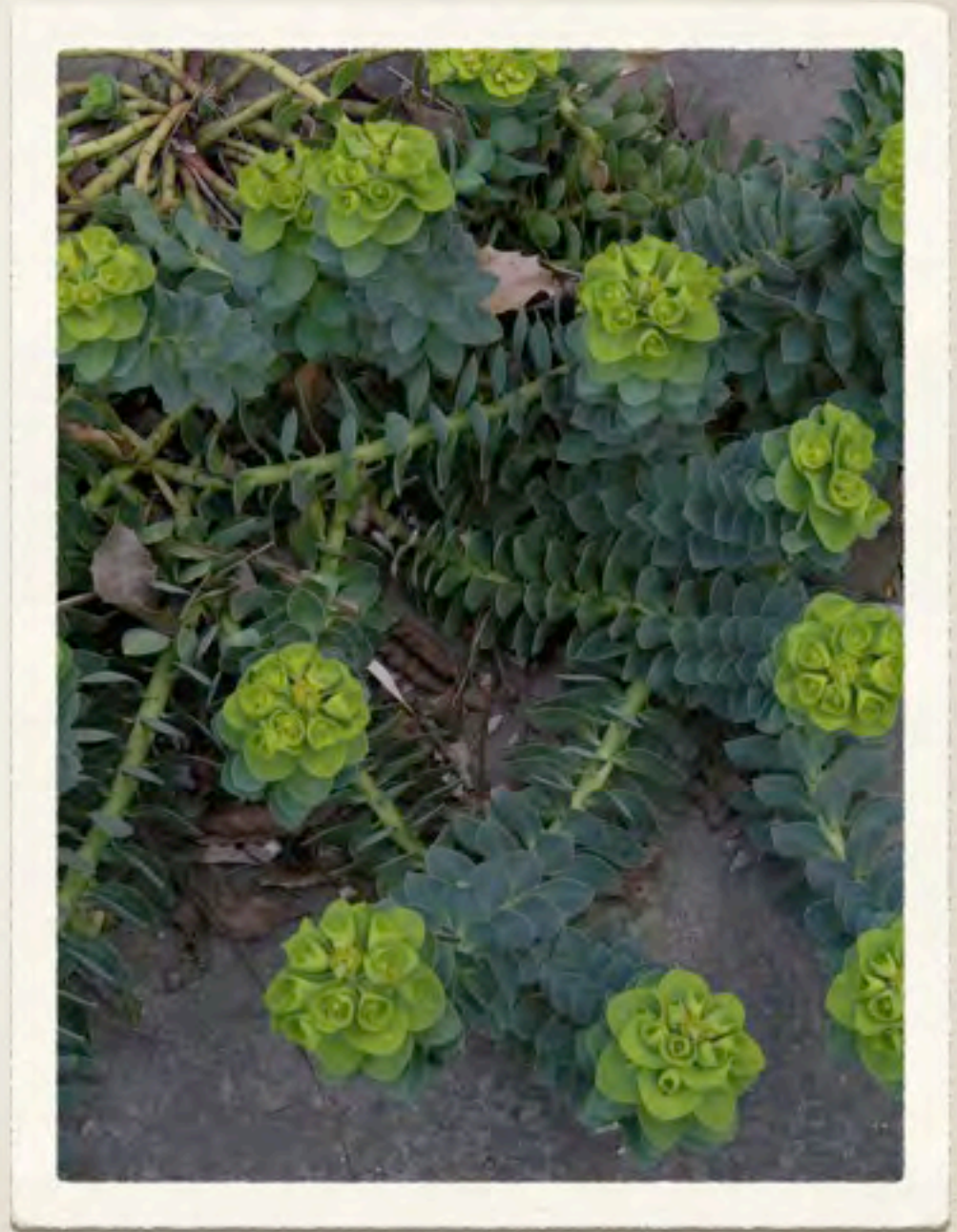


Euphorbias

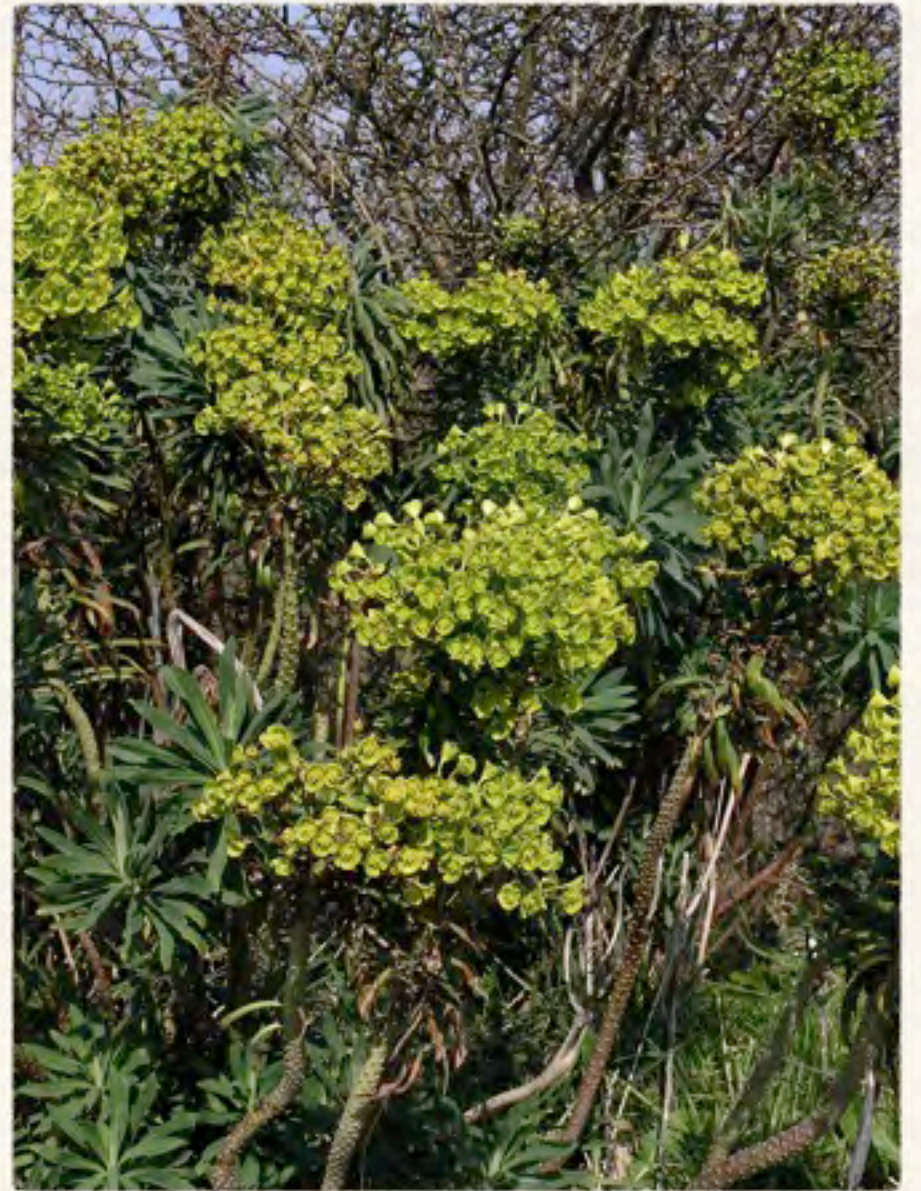
If it offers white sap, hold hands back

Euphorbia - *Euphorbia*

- * a varied group of both cultivated and wild plants
- * white latex sap exudes from broken leaves and branches
- * showy bracts surround small flowers
- * wild/cultivated species can form large colonies



Euphorbia species- *Euphorbia*



Phytoxic plants

Rue - *Ruta graveolens*

- * A Mediterranean herb
- * Sap on skin exposed to sun can cause blistering
- * Yellow flowers and blue-grey foliage



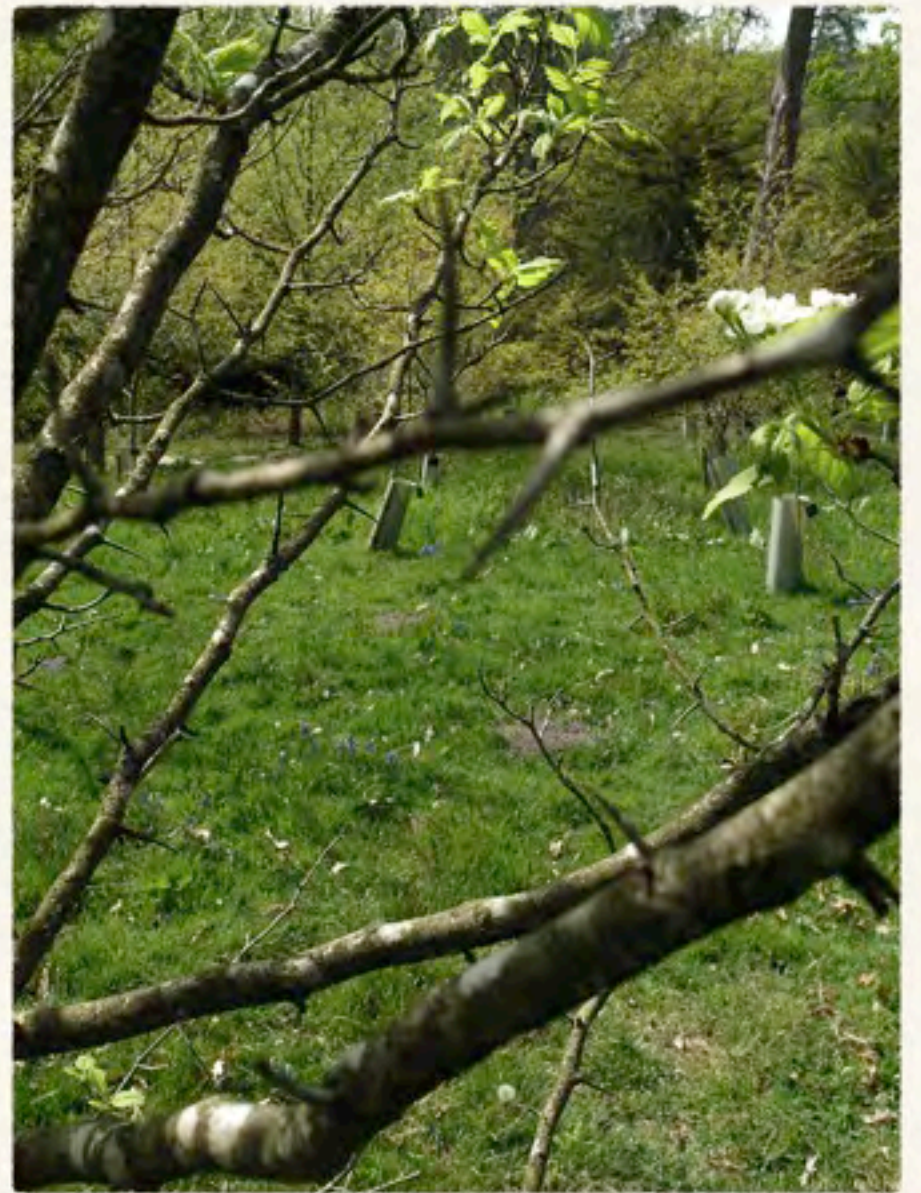
Rue- *Ruta graveolens*



Thorns



Thorns



Thorns

